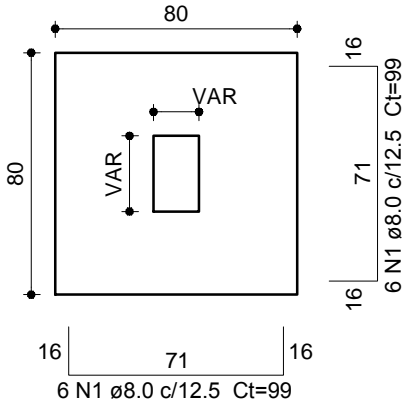
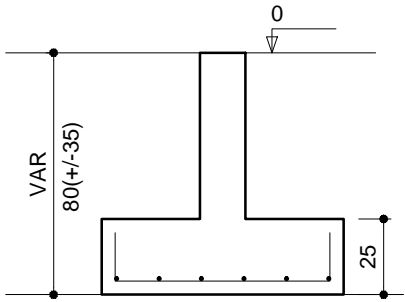


S1=S2=S3=S4=S5=S12=S17=S18=S23=S24=S25
=S26=S27

PLANTA
ESC 1:25

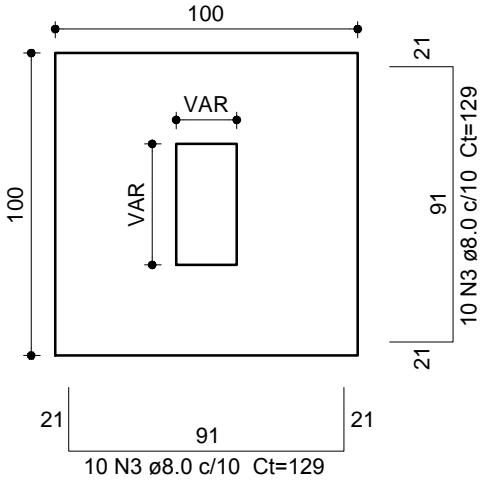


CORTE
ESC 1:25

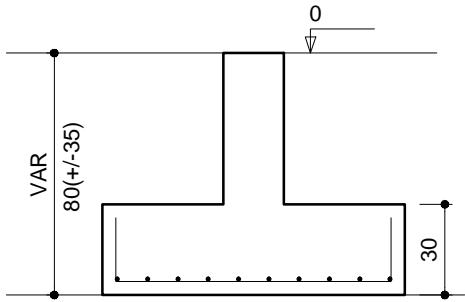


S6=S7=S15=S19=S20

PLANTA
ESC 1:25

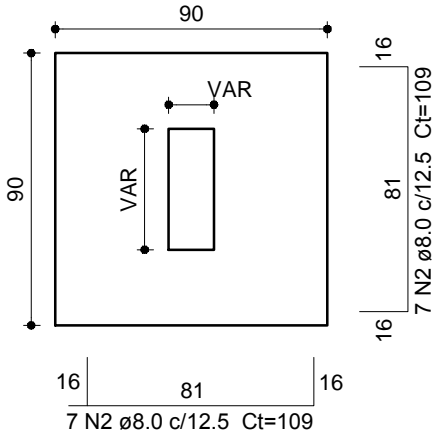


CORTE
ESC 1:25

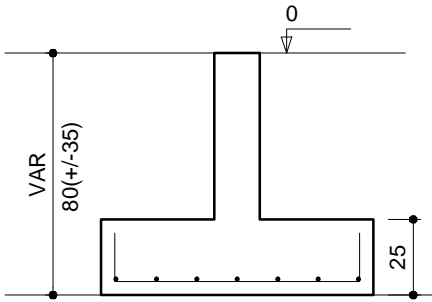


S10=S11=S13=S16

PLANTA
ESC 1:25

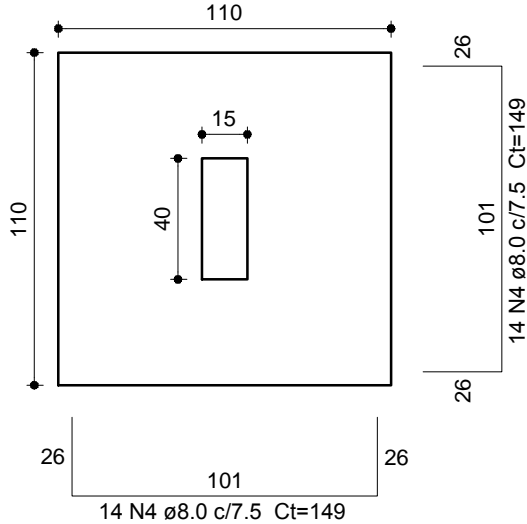


CORTE
ESC 1:25

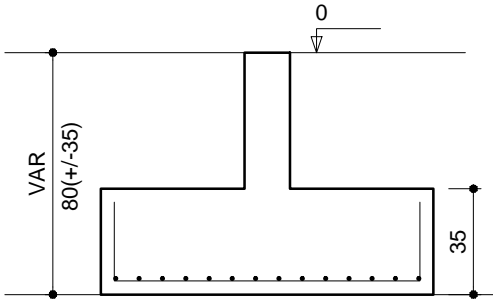


S8=S9=S14=S21=S22

PLANTA
ESC 1:25



CORTE
ESC 1:25



Relação do aço

AÇO	N	DIAM (mm)	QUANT	C.UNIT (cm)	C.TOTAL (cm)
CA50	1	8.0	156	99	15444
	2	8.0	56	109	6104
	3	8.0	100	129	12900
	4	8.0	140	149	20860

Resumo do aço

AÇO	DIAM (mm)	C.TOTAL (m)	PESO + 10 % (kg)
CA50	8.0	553.1	240.1
PESO TOTAL (kg)			
CA50	240.1		

Volume de concreto (C-25) = 6.51 m³
Área de forma = 27.7 m²

PREFEITURA MUNICIPAL DO RIO GRANDE

SECRETARIA DE MUNICÍPIO DE COORDENAÇÃO E PLANEJAMENTO

AMPLIAÇÃO E REFORMA E.M.E.F

PORTO SEGURO

RUA DAS ALGAS, 340, RIO GRANDE | RS

ESTRUTURAL OBRA 2

DETALHAMENTO DE SAPATAS

SMCP
04.2016

MICHELE SCHNEIDER
Engenheira Civil - CREA RS 202803

EVERTON MENA LOPES
Engenheiro Civil - CREA RS 166622

03/07

ESC. 1:25